



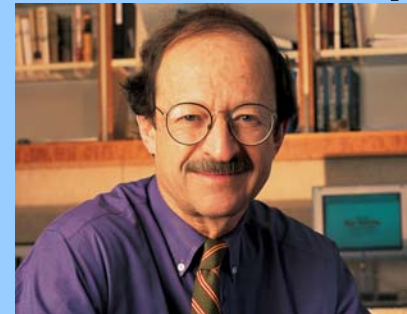
The Global Science Corps

Kiera Carlisle & Arlen K. Hastings
Science Initiative Group
Accra, Ghana
April 29, 2006



What and Why?

- The GSC is a new program that will place scientists from advanced countries in universities and research institutes in developing countries for year-long terms to share expertise and collaborate with local partners.
- Conceived by Dr. Harold Varmus as a mechanism to help build scientific capacity in the developing world.



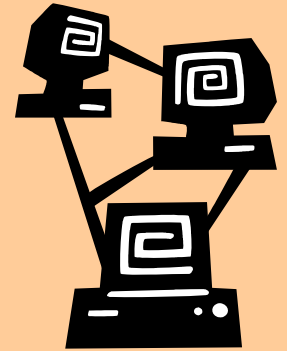
www.globalsciencecorps.org

g

S

C

Objectives



- Provide GSC fellow with unique and valuable research experience
- Help host institution develop its S&T research capacity through interaction with and instruction from the fellow
- GSC fellows will share expertise beyond host sites via lectures, seminars, etc.
- Promote sustained collaboration between GSC fellow and researchers at host institution even after placement has ended, through electronic communication and return visits
- Establish alumni network of GSC Fellows and host scientists



Context

- Administered by the Science Initiative Group (SIG), which manages the Millennium Science Initiative (MSI) (www.msi-sig.org)
- Host institutes to include MSI Centers and others at comparable levels of excellence
- Host sites identified in Uganda, Cameroon, Botswana; also Latin America
- Others to be recommended by local scientific community, SIG Board, TWAS, NIH, foundations and other partners
- SIG to facilitate appropriate host/fellow matches



g

s

c

GSC Fellows

- Individuals at different career stages:
 - Young post-doctoral scientists
 - Faculty members on sabbatical
 - Mid-career or senior scientists
- Scientists in the Diaspora especially encouraged to participate
- In pilot phase, fellows recruited through partnerships with U.S. and Canadian universities, research institutions and government agencies
- Future recruitment will also reflect research priorities of host countries and/or institutions



GSC & UNDP



- SIG and UNDP's Special Unit for South-South Cooperation developing two special GSC components
 - **Diaspora** component to place émigré scientists in their home regions
 - **South-South** component to place scientists from advanced developing countries in other developing countries

g

s

c

Nairobi Workshop

January 2006





Current Efforts

- Raising funds
- Building partnerships
- Establishing selection criteria for fellows and hosts
- Developing mechanisms for fellow/host matching
- Spreading awareness



What Can You Do?

- Apply for your department or institute to become a host site
- Publicize the GSC within your organization and/or within Diaspora networks
- Apply to foundations for support to host GSC fellows
- Seek political commitment and support – both national and pan-African via NEPAD
- Act as advocate for the GSC program