

The Millennium Science Initiative and the Science Initiative Group: Behind the Global Science Corps

**Arlen K. Hastings
Science Initiative Group
Nairobi, Kenya
January 16, 2006**

The MSI: What is it?

An international initiative to:

- create and nurture world-class science and scientific talent in the developing world
- foster innovative research and applications of specific value to the host country or region
- teach scientists & engineers; form foundation for educating and training future generations
- develop linkages with educational and research institutions, the private sector, and the global scientific community



SIG: Who are we?

Board Members:



Phillip Griffiths (chair)



J. Tomas Hexner



Jacob Palis



Harold Varmus

Mohamed Hassan



Chung Kim



CNR Rao



(SIG Staff: Arlen Hastings, Alan Anderson, Kiera Carlisle)



The MSI: A Flexible Concept

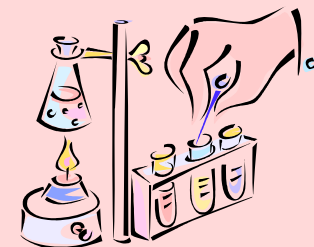
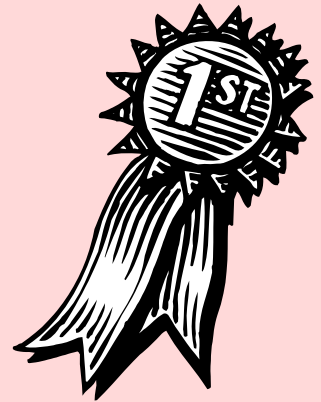


Adaptable in Form & Content:

- Centers of Excellence (Chile, Mexico, Uganda)
- Networks of Excellence (Brazil)
- Regional Networks (AMMSI = African Mathematics Millennium Science Initiative)
- Other models also possible
- Variety of scientific topics, basic to applied

The MSI: Features

- Scientific excellence
- Merit-based selection and evaluation
- Leaders of major scientific stature
- Scientific autonomy – but not institutional isolation
- Opportunities for scientists to work in their home countries and to collaborate with colleagues abroad
- Adequate research budgets
- Ownership by the stakeholders
- Integration with country's development priorities
- Linkages to institutions, private sector, government





MSI & GSC: Parts of a System

To be competitive in a globalized economy and to address its own needs, a country should have:

- Universities
- Centers of Excellence (MSI)
- Capacity to import, adapt and use existing knowledge. GSC can contribute to this.
- Technology firms – to apply existing and new knowledge to value-added products

Evolution of the MSI in Africa

- Original concept: 3 targeted areas
 - Biotechnology (Uganda, Cameroon, Botswana, Namibia)
 - Mathematics (Regional)
 - Instrumentation and Information Technology (Tanzania)
- AMMSI – implemented with foundation support
- Uganda – being implemented with World Bank support; broader than original concept
- Tanzania – in process with World Bank involvement
- Cameroon, Namibia, Botswana – to be phased in

1 EQUATORIAL
2 RWANDA
3 BURUNDI

Global Science Corps

- Idea originated by Harold Varmus, who joined SIG board to help implement GSC through MSI/SIG.
- MSI Institutes will serve as GSC host institutions.
- MSI scientists will serve as liaison for GSC.

www.msi-sig.org

www.globalsciencecorps.org

