

# WHAT IS AN ACADEMY?

**Jackie Olang**

Network Coordinator

[j.olang@aasciences.org](mailto:j.olang@aasciences.org)

NASAC Secretariat

*For more information:*

***[nasaonline.org](http://nasaonline.org)***



**Forum on Regional Networks in Africa & RISE Student Scientific Conference  
5-8 October 2010 – Benoni, Gauteng, South Africa**

# What is an Academy?

- Assembly/fellowship of intellectuals/scientists dedicated to the advancement of scientific knowledge within the society (nationally/globally)
- Champions economic and social development through application of STI
- Phenomenon of 17<sup>th</sup> and 18<sup>th</sup> century
  - ▣ Academia Nazionale dei Lincei of Italy – 1603
  - ▣ Royal Society of London of England – 1660
  - ▣ L'Academie Royal des Sciences of France – 1666
  - ▣ German and Swedish Academies – 1700 & 1739 resp.

# Identity of an Academy

- Provide a public voice for the promotion of both **scientific excellence** and **science-based development**
- Demonstrate existence of a strong scientific community that enables citizens to **address critical societal issues**
- **Empower both scientists and society** (education, STI, dissemination, recognizing achievement)
- **Independent**, objective, rational and non-partisan
- Provide **evidence-based positions** on topical issues

# Academies in Africa

In Africa, the oldest academy is the ***Madagascar's National Academy of Arts, Letters and Science*** – established in **1902**

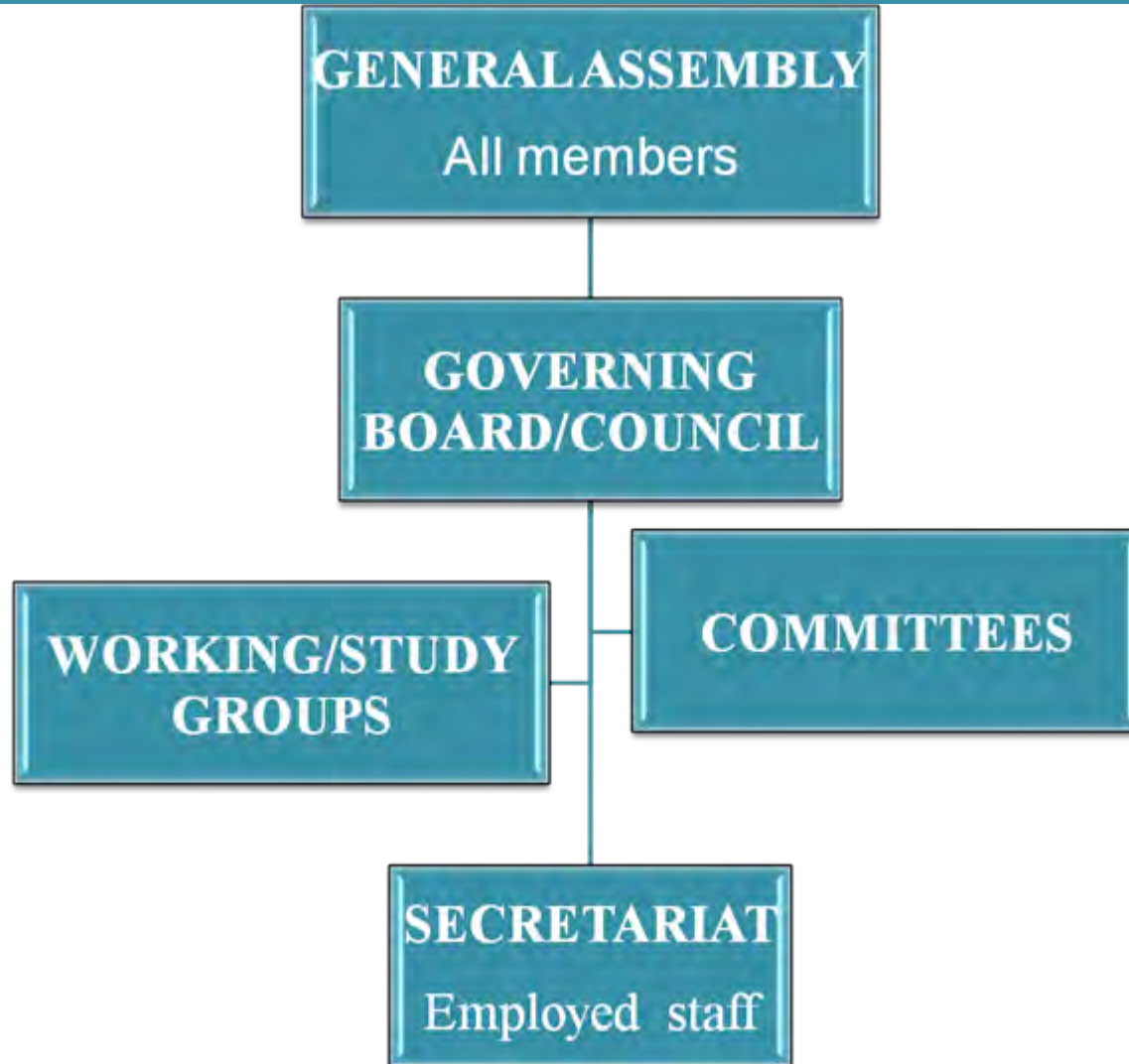
## **What an Academy is not a:**

1. Research institution or University
2. Lobby group
3. Government department
4. Investment club
5. Consultancy firm
6. Professional association

# Role of science academies

- **Learned Society** – honorific association of scientists for science with limited set of disciplines
- **Advisor to Society** – policy for science, and science for policy – extends to societal issues
- **Manager and facilitator of Research** – provision of advise on relevant research to fulfill both societal and policy needs

# Regular Governance Structure



# Counting on your support...

